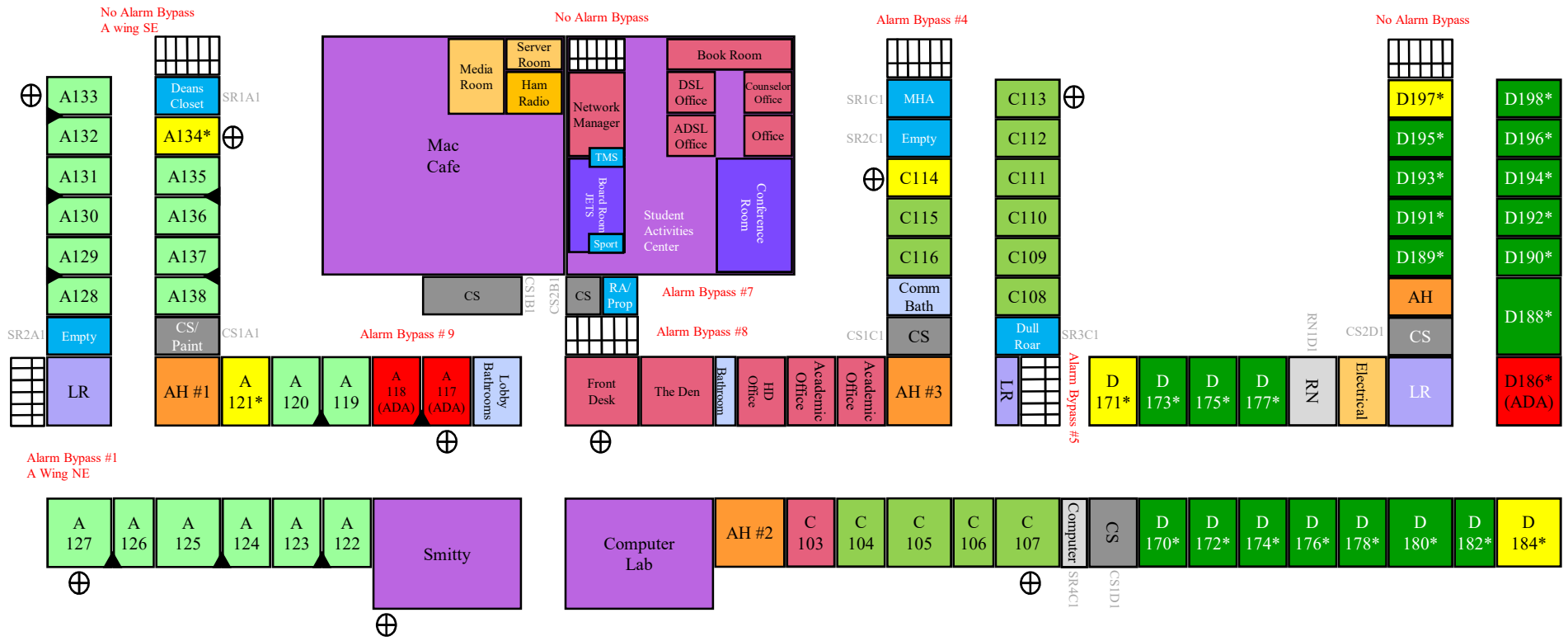


McConnell Hall - First Floor

116 total spaces, 58 double occupancy

* private bath ▲ suite bath
 -all other rooms use community baths

60 old wing resident spaces – 31 double occupancy rooms
 40 new wing resident spaces – 20 double occupancy rooms
 36 Females, 66 Males
 102 total resident spaces – 51 double occupancy rooms
6 Staff Rooms – 114, 121, 134, 171, 184, 197
3 emergency rooms – 117 (ADA), 118 (ADA), 186 (ADA)



A100 = 18 (36)

C100 = 13 (24)

D100a = 10 (20)

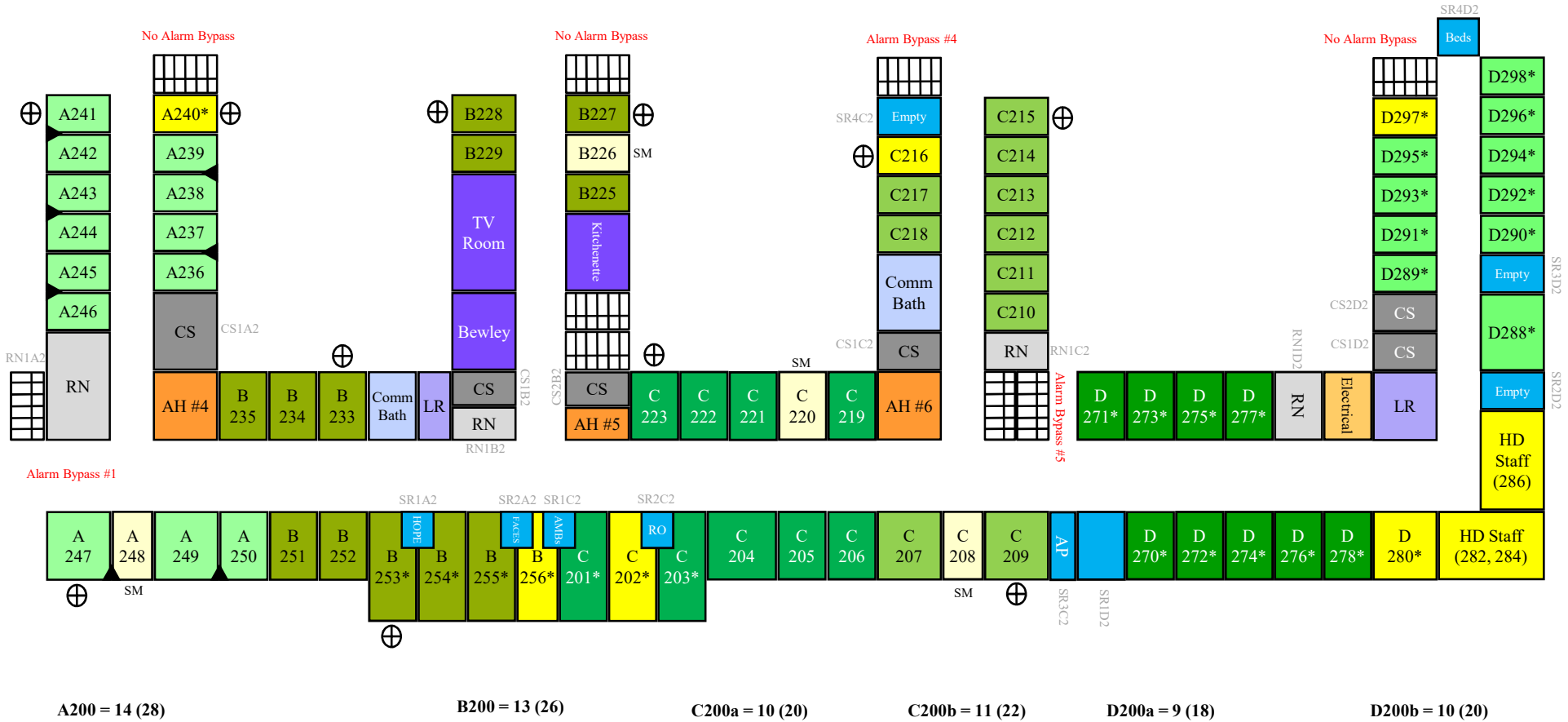
D100b = 10 (20)

McConnell Hall - Second Floor

146 total spaces, 73 double occupancy

* private bath ▲ suite bath
 -all other rooms use community baths

96 old wing resident spaces – 48 double occupancy rooms
 38 new wing resident spaces – 19 double occupancy rooms
 134 total resident spaces – 67 double occupancy rooms
 134 Females, 0 Males
 6 staff rooms – 202, 216, 240, 256, 280, 298
 4 senior mentors rooms – 208, 220, 226, 248

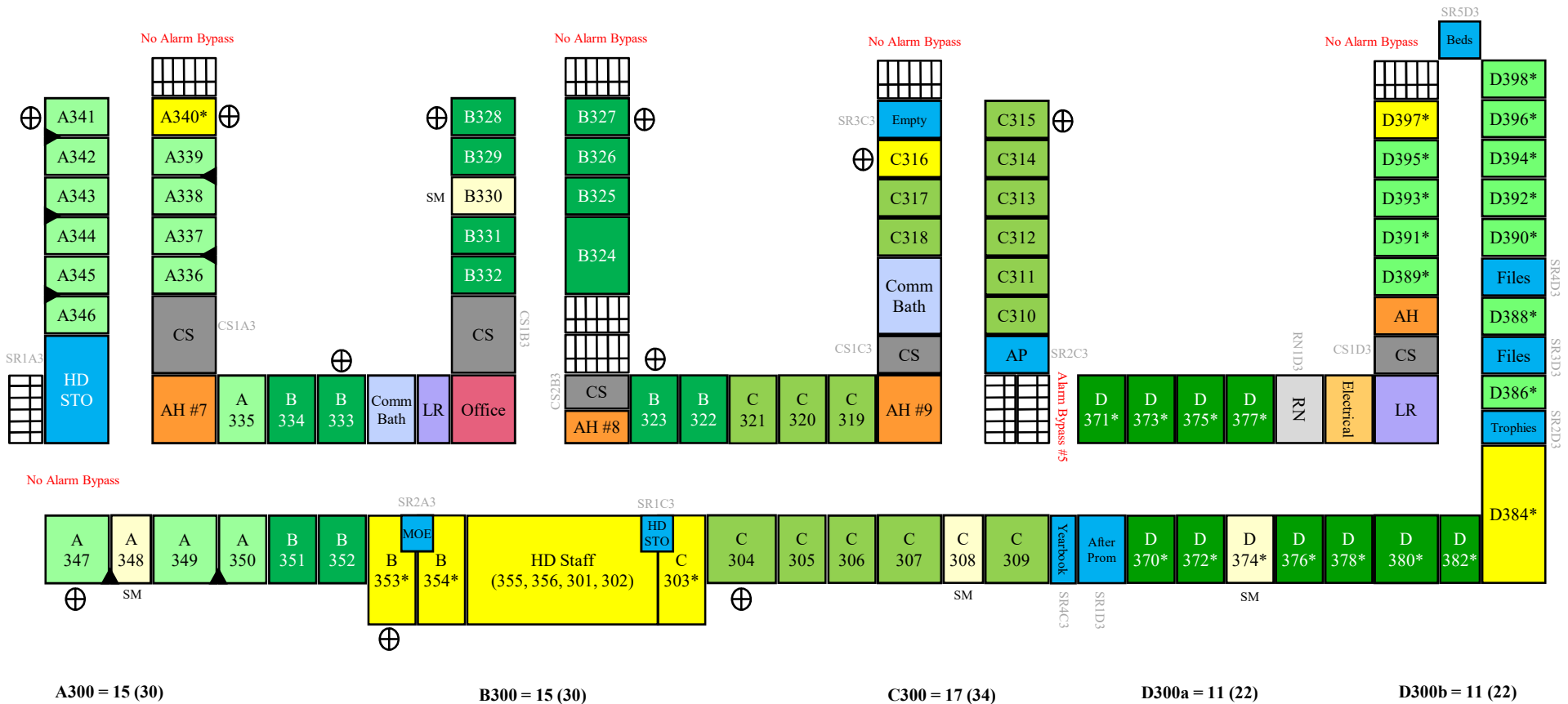


McConnell Hall – Third Floor

152 total spaces, 76 double occupancy

* private bath ▲ suite bath
 -all other rooms use community baths

94 old wing resident spaces – 47 double occupancy rooms
 44 new wing resident spaces – 22 double occupancy rooms
 138 total resident spaces – 69 double occupancy rooms
 0 Females, 138 Males
 7 staff rooms – 303, 316, 340, 353, 354, 384, 397
 4 senior mentor rooms - 308, 330, 348, 374



1st Floor

60 old wing resident spaces – 31 double occupancy rooms
40 new wing resident spaces – 20 double occupancy rooms
36 Females, 66 Males
102 total resident spaces – 51 double occupancy rooms
6 Staff Rooms – 114, 121, 134, 171, 184, 197
3 emergency rooms – 117 (ADA), 118 (ADA), 186 (ADA)

2nd Floor

96 old wing resident spaces – 48 double occupancy rooms
38 new wing resident spaces – 19 double occupancy rooms
134 total resident spaces – 67 double occupancy rooms
134 Females, 0 Males
6 staff rooms – 202, 216, 240, 256, 280, 298
4 senior mentors rooms – 208, 220, 226, 248

3rd Floor

94 old wing resident spaces – 47 double occupancy rooms
44 new wing resident spaces – 22 double occupancy rooms
138 total resident spaces – 69 double occupancy rooms
0 Females, 138 Males
7 staff rooms – 303, 316, 340, 353, 354, 384, 397
4 senior mentor rooms - 308, 330, 348, 374

$1^{\text{st}} (66) + 3^{\text{rd}} (138) = 204 \text{ Males}$
 $1^{\text{st}} (36) + 2^{\text{nd}} (134) = 170 \text{ Females}$